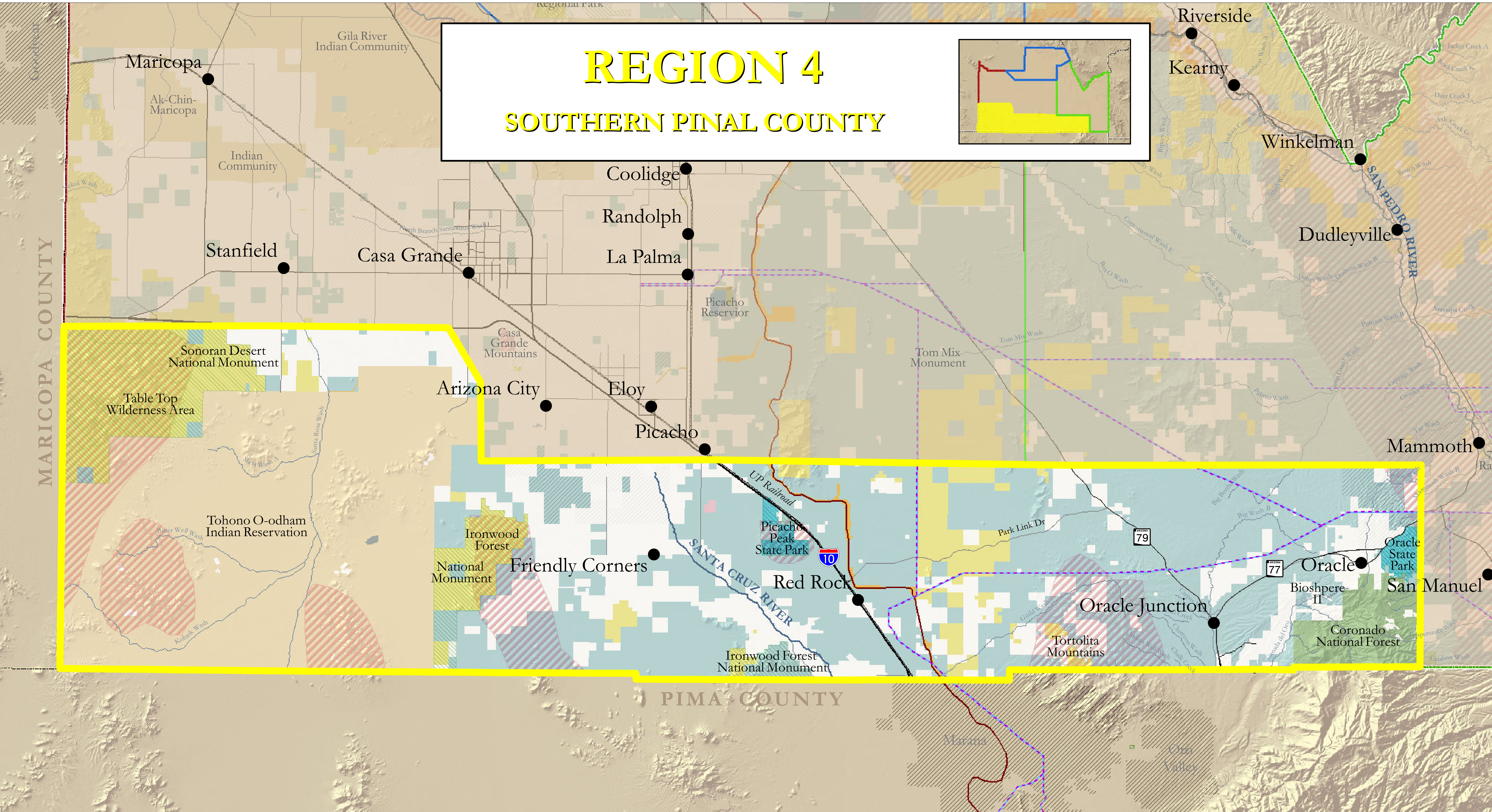
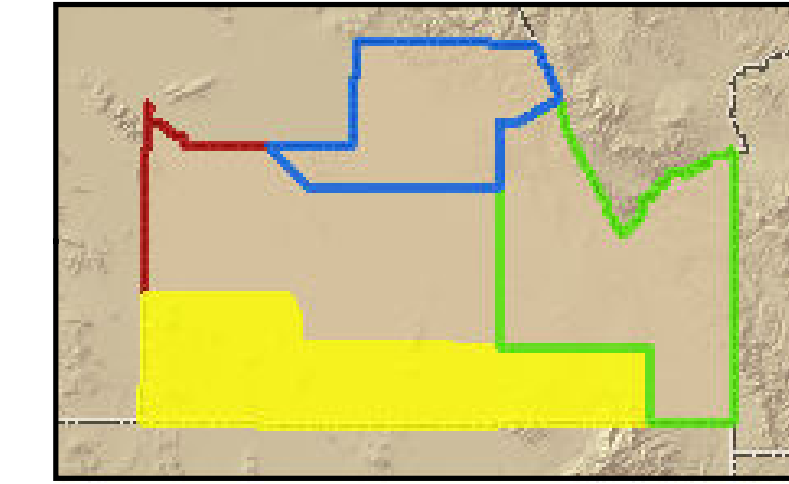


# REGION 4

## SOUTHERN PINAL COUNTY



**PINAL PARTNERSHIP**  
Uniting the Vision for Pinal County

**OPEN SPACE INITIATIVE WORKSHOP**  
SEPTEMBER 24, 2010

### LEGEND

	AREAS OF HIGH BIOLOGICAL VALUE		BLM LAND		STATE TRUST LAND
	PROTECTED LAND		PRIVATE LAND		LOCAL/STATE PARKS
	SUNZIA ROUTES - JULY 2010		MILITARY LAND		NATIONAL PARKS
	CENTRAL ARIZONA PROJECT (CAP)		INDIAN LAND		NATIONAL FORESTS
	INCORPORATED CITY BOUNDARIES		BOR/OTHER		

DATA SOURCES: Arizona Land Resource Information System, Arizona Land and Water Trust, ESRI, Pinal County, The Nature Conservancy (TNC) and USDI/BLM/NewMexico.

0 2.5 5 10 Miles

ARIZONA LAND WATER TRUST

DISCLAIMER: Arizona Land and Water Trust (ALWT) has provided this GIS map as a public information resource for the Pinal Partnership Open Space Initiative Workshop. Every reasonable effort has been made to assure the accuracy of the map, however the information displayed is only as accurate as the data sources collected and applied. ALWT does not accept any responsibility for any errors, omissions, or positional accuracy, and therefore, there are no warranties which accompany this map. This product is for informational purposes only and was not prepared for, or is suitable for, legal, engineering or surveying purposes. Users of this information should review or consult the primary data and information sources to ascertain the usability of the information.

BLM/SUNZIA DISCLAIMER: The GIS route shapefiles and maps developed by BLM and/or its 3rd Party EIS Contractor for the SunZia Southwest Transmission Line Project are considered working products/documents which are intended to depict the most accurate/current route alignments based on the best available information. These are subject to modification/change pending a detailed environmental impact study that the Bureau of Land Management (BLM) is currently undergoing and should not be considered final route/routes determinations until the EIS has been completed and approved by the BLM.